



## Cartography and the use of sources When the historian's work does not involve writing and is not limited to illustrations

Dr. Micol Ferrara

25.05.2016

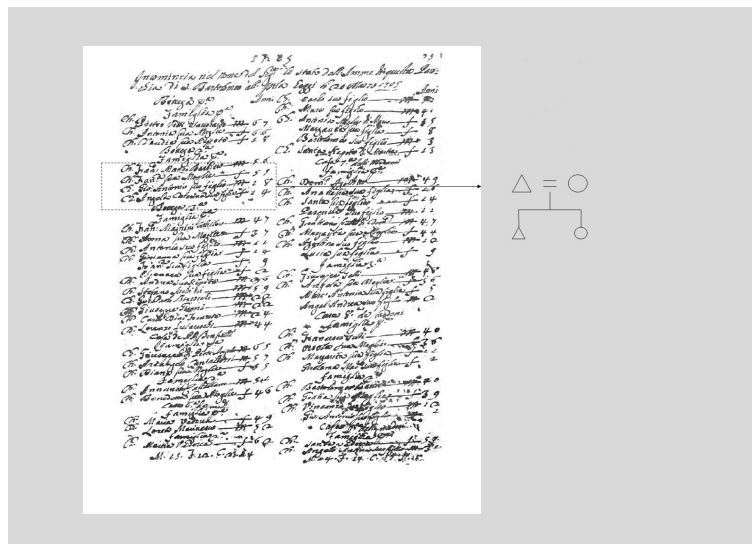
**Scientific organisation:** Dr. Benedetta Albani and Constanza López Lamerain (Max Planck Research Group "Governance of the Universal Church after the Council of Trent")

The seminar aims to bring to light the potentiality of cartography in historical enquiry. In some cases, one cannot limit research to the mere transcription of documents or summarize them in a written text. In these circumstances, one must resort to an interdisciplinary approach. Spatial categories are useful for reconstructing the material and symbolic practices of a particular population in a given historical period. During the seminar there will be a presentation of the most recent techniques of cartographic organization including the GIS (geographic information system).

In this case, the approach used is linked to the reading of the territory in relation to the individual sources. To give an example, it means the situating of buildings, the reconstructing of itineraries, the polarization of the space in economic sense etc. In some cases, it can even mean using 3D technology when a two-dimensional representation proves inadequate. One example of this kind is the three-dimensional reconstruction of some ghettos in the old Italian states, and the Roman one in particular. It is a valuable tool for analyzing and storing information that can be extended to many other areas of research beyond the present case.

During the seminar, three particular study cases connected with the city of Rome in the modern age will be discussed. They are useful examples for understanding the use of cartography in different fields of enquiry.

- The area of exclusion and isolation linked to the Jewish presence and the location and physical characteristics of the ghetto.



- The organization of the urban space, starting from individual ecclesiastical districts.
- The space of conversion, which brings out distinct practices in the treatment of Jews and Muslims.

Each of these aspects will be dealt with, starting from a short general introduction, leading to the specific analysis of research theories, sources, methodology followed, and the cartographic results obtained.

The seminar will be held in English and will take place at the MPIeR (seminar room Z02) from 4 to 6 pm.

For registration please contact Dr. Benedetta Albani: [albani@rg.mpg.de](mailto:albani@rg.mpg.de).

### Recommended reading:

M. Ferrara, *Self-government and social control in the Ghetto of Rome in the modern era*, in *Religione e filantropia nel Mediterraneo: tradizioni, simboli e iconografie*. Baskerville, Bologna 2016, pp. 279-299.

[http://issuu.com/baskerville.it/docs/re\\_fi\\_med](http://issuu.com/baskerville.it/docs/re_fi_med)

D. Calabi, *Venezia e il Ghetto. Cinquecento anni del "recinto degli ebrei"*. Bollati Boringhieri, Torino 2016.

M. Ferrara, *Cartographic Elaboration of 1733 Descriptio Hebreorum*, in *Gli abitanti del ghetto di Roma*, (edited by) A. Groppi, Viella, Roma 2015, tavole 4 – 8.

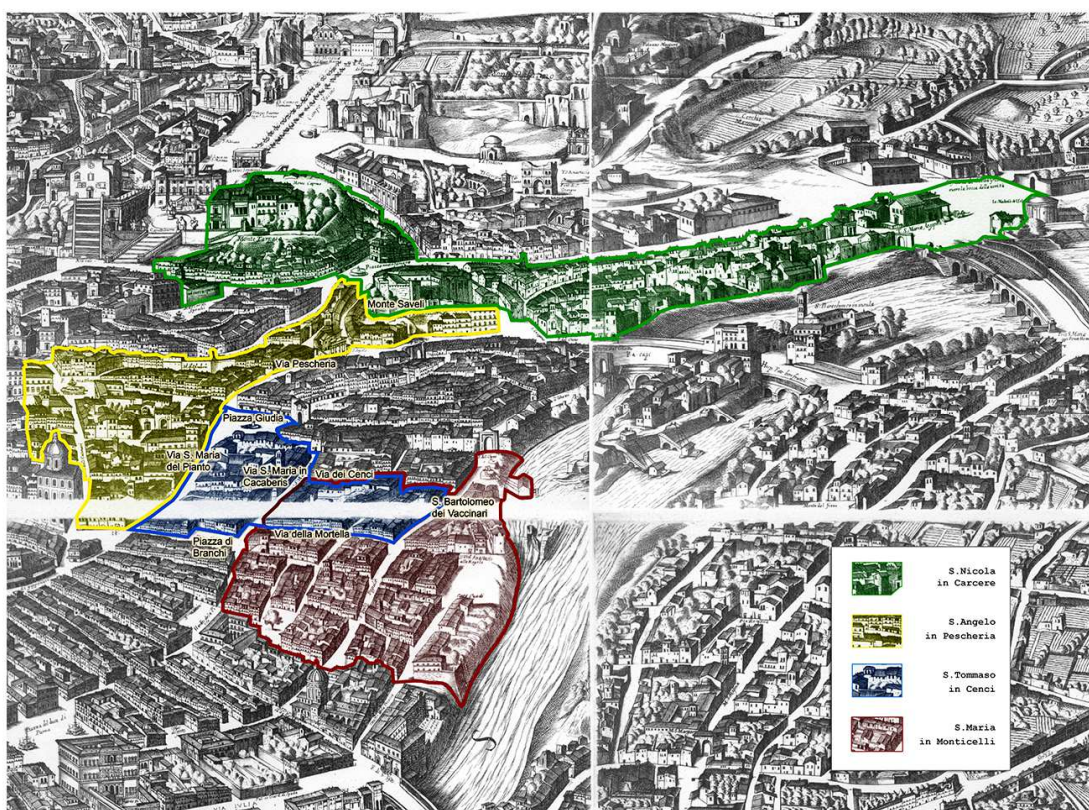
M. Ferrara, *Dentro e fuori dal ghetto. I luoghi della presenza ebraica a Roma tra XVI e XIX secolo*. Mondadori Università, Milano 2015.

<http://www.mondadorieducation.it/media/contenuti/universita/landing/index.html>

*Roma nel Settecento. Immagini e realtà di una capitale attraverso la pianta di G.B. Nolli*, (a cura di) C. M. Travaglini, K. Lelo, Università degli Studi Roma Tre, CROMA – EdilStampa, Roma 2013.

Vincenzo Verniti, *La ricerca bibliografica in storia della cartografia. Una guida a strumenti e risorse nel contesto bolognese*, "Storicamente", 1 (2005), n. 82.

<http://storicamente.org/verniti>



### **Dr. Micol Ferrara short biography:**

Micol Ferrara, PhD in "Culture and Territory", was a researcher in the Department of Economic History of the Faculty of Humanities of the University of Rome Tor Vergata. She is a lecturer of "Jewish History in the Modern Age" at the three-year Degree Diploma of the Society of Italian Jewish Communities (UCEI), she also works closely with other research institutions. She is part of the editorial staff of the Journal of History ([www.giornaledistoria.net](http://www.giornaledistoria.net)). She is a member of the Italian Association of Urban History (AISU), the Italian Society of Historians of Economy (SISE), of Mediterranean Studies Association (MSA) and the Italian Society of Historical Demography (SIDeS). She has taken part in seminars, national and international conferences, speaking on the history of Roman Jews. On this same theme, she has published several essays including: *Sulle orme del parroco: la parrocchia di S. Crisogono in Trastevere nel XVIII secolo*, in: *Trasformazioni urbane: il caso del Rione Trastevere*, edited by L. Ermini Pane e C.M. Travaglini, Roma, 2010, pp. 363-398; *La struttura edilizia del «serraglio» degli ebrei romani (secc. XVI-XIX)*, in: «Roma moderna e contemporanea», XIX (2011), n. 1, pp. 83-102; *Popolazione e territorio nella Roma del Settecento: un'analisi sugli Stati delle Anime delle parrocchie di S. Crisogono e di S. Bartolomeo all'Isola*, in: «Popolazione e Storia», 2011, n. 1-2, pp. 43-63. Together with S.H. Antonucci, she has also edited the volume: *La punizione che diventò salvezza. Il salvataggio della famiglia Sonnino durante la Shoah ad opera del prof. Giuseppe Caronia*, Udine, Forum, 2014. She has recently published the monograph: *Dentro e fuori dal ghetto: i luoghi della presenza ebraica a Roma tra XVI e XIX secolo*, Milano, Mondadori, 2015. She edited the book: *Frammenti di Ossidiana. Appunti di vita e scritti di Storia economica in memoria di Roberta Morelli*, Universitas Studiorum, Modena 2016.



Max Planck Research Group

### **Governance of the Universal Church after the Council of Trent**

Papal administrative Concepts and Practices as exemplified by the Congregation of the Council between the Early Modern Period and the Present

### **Dr. Benedetta Albani**

Head of the Max Planck Research Group

### **Max-Planck-Institut für europäische Rechtsgeschichte**

Hansaallee 41

60323 Frankfurt am Main

Tel.: +49 (0)69 78978-158

Fax.: +49 (0)69 78978-169

[congregatioconcilii@rg.mpg.de](mailto:congregatioconcilii@rg.mpg.de)

[albani@rg.mpg.de](mailto:albani@rg.mpg.de)

[www.rg.mpg.de](http://www.rg.mpg.de)